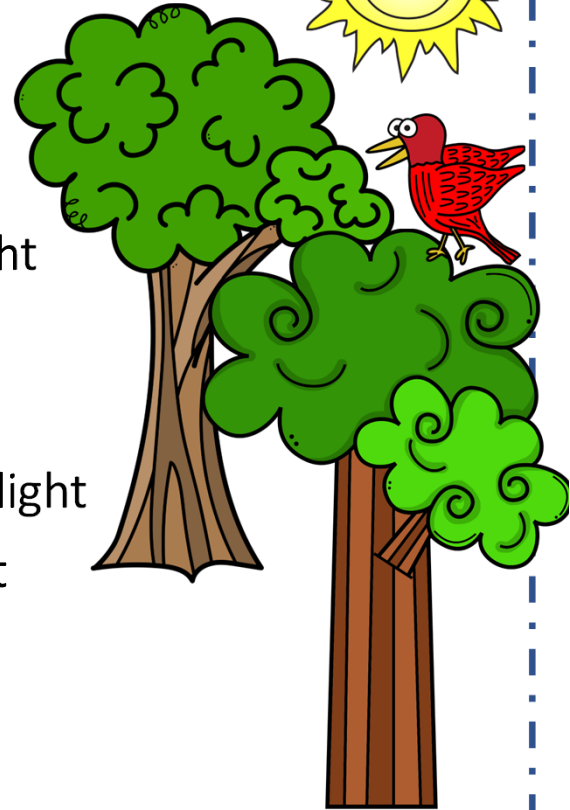


# A Place for Me



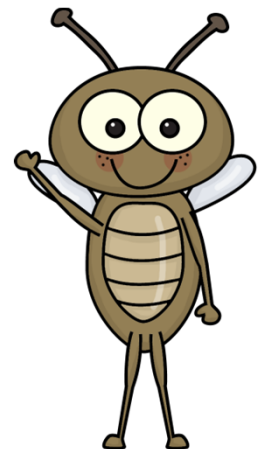
In the park, I see a tree  
Green and tall, so full of glee  
With branches strong and leaves so bright  
It's a lovely sight, all day and night



The sun shines down, with warmth and light  
And birds sing songs, with all their might  
I hear their chirps, and see their wings  
As they soar, with graceful things

And on the ground, I see a bug  
With legs so long, it's quick as a rug  
It crawls and hops, with ease and grace  
A little creature, in its own pace

The park is where, I love to play  
My friends and I, we stay all day  
It's a place of joy, and peace of mind  
Where I can be, one with all kind.



1. Underline each word that you could not read.
2. Circle each word that took you more than 1 try.

2

# A Place for Me

Answer according to the reading passage:

1. **Where does the poem take place?**

- a. forest
- b. park
- c. yard

2. **The tree branches are:**

- a. strong
- b. brown
- c. ball and a bone

3. **What shines down?**

- a. light
- b. moon
- c. sun

4. **What has long legs?**

- a. a bug
- b. a dog
- c. a spider

5. **Who plays at the park?**

- a. the friends
- b. the birds
- c. the bugs

**2**

# **A Place for Me**

## **Open Response Questions**

### **Open Response Questions for Thinking Skills:**

- 1. Inferring**
- 2. Making Connections**
- 3. Summarizing**
- 4. Visualizing**

- 1. Why do you think the poem is called “A Place for Me?”**
- 2. What did this poem remind you of?**
- 3. In two sentences summarize what this poem is all about.**
- 4. What images went through your mind as you read the poem?**

- 1. How many rhyming words can you find?**
- 2. Is this a good title for the poem? What would be another good title for the poem?**